

SONY

Hi-Fi Products
Service Bulletin

Sony Service Company - Technical Services
A Division of Sony Corporation of America
Sony Drive, Park Ridge, New Jersey 07656

Model: RM-E7

No. 29

Subject: Upgrade From A 44-Key To A
91-Key Program

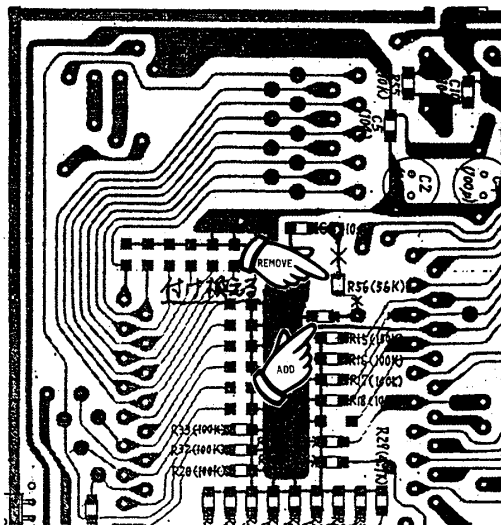
Date: August 5, 1988

Symptom:
(125)

The remotes that were included with the preamps of serial numbers up to 800251 only had a 44-key programmable format and only the inside keys could be programmed.

Solution: To upgrade to a 91-key program, move R56 (56K) from its present position to the unoccupied R28 position. Leave the R56 position open. Be careful with the plastic tabs when opening the cabinet.

The RM-E7 stock in KCP is the upgraded version



Reference: Fax

PRINTED IN U.S.A.
CSA-13788-6

Accessories
CSA-13